

Category

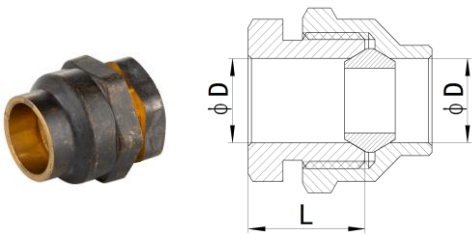
- HS310 Brass Flare Fitting
- HS320 Brass Compression Fitting
- HS330 Brass Threaded Fitting
- HS340 Brass End-feed Fitting

Features

- Both CW602N and CW511L material
- WATERMARK approval

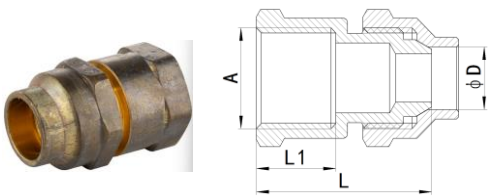
HS310 Brass Flare Fitting

HS310-001 COMP UNION FLARED



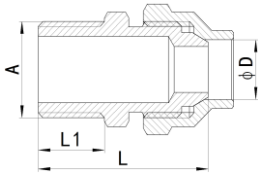
SIZE	D	L
15Cx15C	13	18.5
20Cx20C	19.2	19.5
25Cx25C	25.5	23
32Cx32C	31.9	27.5
40Cx40C	38.3	31
50Cx50C	51	31

HS310-002 COMP UNION FLARED FEMALE



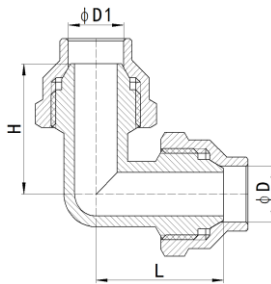
SIZE	D	A	L	L1
15Cx15FI	13	Rp1/2	37.5	17
15Cx20FI	13	Rp3/4	39.5	18.5
20Cx20FI	19.2	Rp3/4	39.5	18.5
25Cx25FI	25.5	Rp1	46	21
32Cx32FI	31.9	Rp1 1/4	52	24
40Cx40FI	38.3	Rp1 1/2	55	24
50Cx50FI	51	Rp2	60.5	28

HS310-003 COMP UNION FLARED MALE



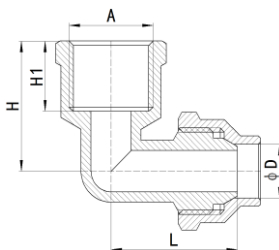
SIZE	D	A	L	L1
15C×6MI	13	R1/2	34.5	11
15C×15MI	13	R3/4	38.5	15
20C×20MI	19.2	R3/4	41	16.5
25C×25MI	25.5	R1	47.5	19
32C×32MI	31.9	R1 1/4	55	21.5
40C×40MI	38.3	R1 1/2	58	21.5
50C×50MI	51	R2	64.5	26

HS310-004 COMP ELBOW FLARED



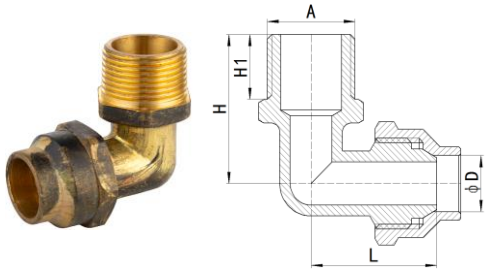
SIZE	D	D1	L	H
15C×15C	13	30	30	30
20C×15C	19.2	13	30.5	33
20C×20C	19.2	34.5	34.5	34.5
25C×25C	25.5	43	43	43
32C×32C	31.9	50.5	50.5	50.5
40C×40C	38.3	56.5	56.5	56.5
50C×50C	51	66	66	66

HS310-005 COMP ELBOW FLARED FEMALE



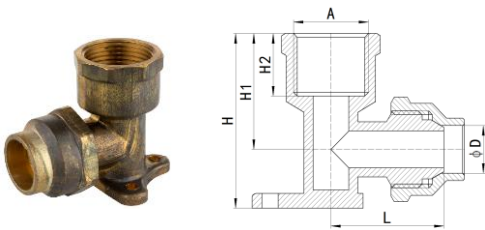
SIZE	D	L	A	H	H1
15C×15FI	13	31.5	Rp1/2	31.5	17
20C×20FI	19.2	34.5	Rp3/4	35	18.5
25C×25FI	25.5	43	Rp1	42.5	21
32C×32FI	31.9	50.5	Rp1 1/4	50.5	24
40C×40FI	38.3	56.5	Rp1 1/2	54.5	24
50C×50FI	51	66	Rp2	65	28

HS310-006 COMP ELBOW FLARED MALE



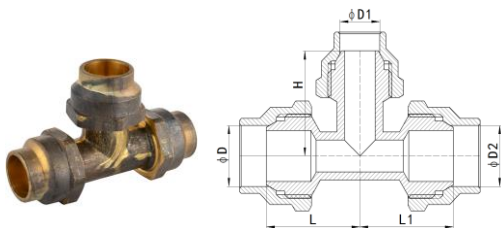
SIZE	D	L	A	H	H1
15C×15MI	13	30	R1/2	34.5	15
15C×20MI	13	33	R3/4	37	16.5
20C×20MI	19.2	34.5	R3/4	39.5	16.5
25C×25MI	25.5	42	R1	46	19
32C×32MI	31.9	50.5	R1 1/4	55.5	21.5
40C×40MI	38.3	54.5	R1 1/2	59.5	21.5
50C×50MI	51	64	R2	71	26

HS310-007 COMP WALLPLATE ELBOW FLARED FEMALE



SIZE	D	L	A	H	H1	H2
15C×15FI	13	31.5	Rp1/2	47.5	31.5	17
20C×15FI	19.2	32	Rp1/2	52.5	33.5	17
20C×20FI	19.2	34.5	Rp3/4	54	35	18.5

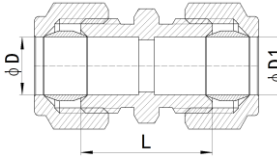
HS310-008 COMP TEE FLARED



SIZE	D	D1	D2	L	L1	H
15C×15C×15C	13	13	13	30	30	30
20C×20C×20C	19.2	19.2	19.2	34.5	34.5	34.5
25C×25C×25C	25.5	25.5	25.5	43	43	43
32C×32C×32C	31.9	31.9	31.9	50.5	50.5	50.5
40C×40C×40C	38.3	38.3	38.3	56.5	56.5	56.5
50C×50C×50C	51	51	51	66	66	66
20C×20C×15C	19.2	19.2	13	34.5	33	34.5
20C×15C×15C	19.2	13	13	30.5	30	33
20C×15C×20C	19.2	13	19.2	30.5	30.5	33

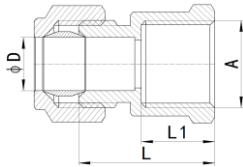
HS320 Brass Compression Fitting

HS320-001 COMPRESSION UNION



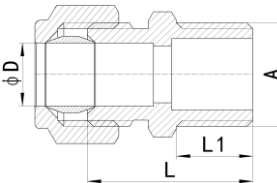
SIZE	D	D1	L
15C×15C	12.8	12.8	29.5
20C×20C	19.1	19.1	34.5
20C×15C	19.1	12.8	32.5

HS320-002 COMPRESSION UNION FEMALE



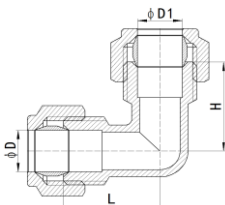
SIZE	D	A	L	L1
15C×15FI	12.8	Rp1/2	31.5	17
15C×20FI	12.8	Rp3/4	33	18.5
20C×20FI	19.1	Rp3/4	35	18.5

HS320-003 COMPRESSION UNION MALE



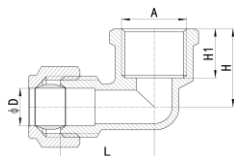
SIZE	D	A	L	L1
15C×15MI	12.8	R1/2	32.5	15
15C×20MI	12.8	R3/4	35	16.5
20C×15MI	19.1	R1/2	35.5	15
20C×20MI	19.1	R3/4	37	16.5

HS320-004 COMPRESSION ELBOW



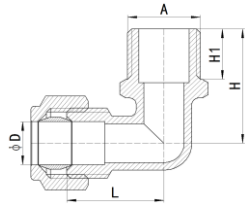
SIZE	D	D1	L	H
15C×15C	12.8	12.8	27.5	27.5
20C×15C	19.1	12.8	28.5	29.5
20C×20C	19.1	19.1	31.5	31.5

HS320-005 COMPRESSION ELBOW FEMALE



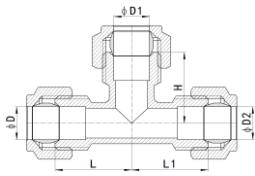
SIZE	D	L	A	H	H1
15C×15FI	12.8	30	Rp1/2	27	17
20C×20FI	19.1	34	Rp3/4	31	18.5

HS320-006 COMPRESSION ELBOW MALE



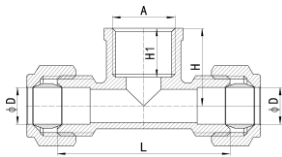
SIZE	D	L	A	H	H1
15C×15MI	12.8	38	R1/2	34	15
15C×20MI	12.8	31	R3/4	36.5	16.5
20C×20MI	19.1	32.5	R3/4	38.5	16.5

HS320-007 COMPRESSION TEE



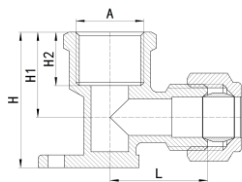
SIZE	D	D1	D2	L	L1	H
15C×15C×15C	12.8	12.8	12.8	27.5	27.5	27.5
20C×20C×20C	19.1	19.1	19.1	31.5	31.5	31.5
20C×15C×20C	19.1	12.8	19.1	28.5	28.5	30
20C×20C×15C	19.1	19.1	12.8	31.5	29.5	31.5

HS320-008 COMPRESSION TEE FEMALE



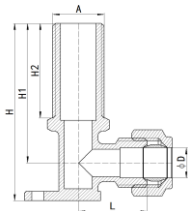
SIZE	D	L	A	H	H1
15C×15FI×15C	12.8	58	Rp1/2	27	17
20C×20FI×20C	19.1	68	Rp3/4	31	18.5

HS320-009 COMPRESSION WALLPLATE ELBOW FEMALE



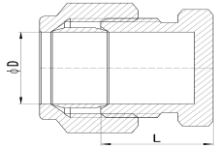
SIZE	D	L	A	H	H1	H2
15C×15FI	12.8	30	Rp1/2	43	27	17
20C×20FI	19.1	34	Rp3/4	50	31	18.5

HS320-010 COMPRESSION WALLPLATE ELBOW



SIZE	D	L	A	H	H1	H2
15C×15MI	12.8	28	G1/2	75	59	40

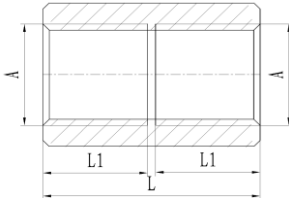
HS320-011 COMPRESSION STOP END



SIZE	D	L
15C	12.8	17.5
20C	19.1	20.5

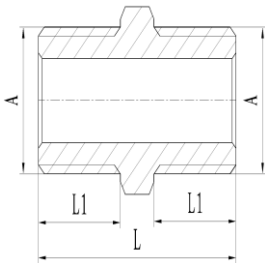
HS330 Brass Threaded Fitting

HS330-001 BRASS HEX SOCKET



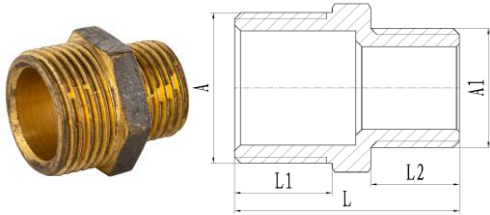
SIZE	A	L	L1
8x8	Rp1/4	27	13
10x10	Rp3/8	28	13.5
15x15	Rp1/2	36	17.5
20x20	Rp3/4	38	18.5
25x25	Rp1	45	22
32x32	Rp1 1/4	51	24.5
40x40	Rp1 1/2	51	24.5
50x50	Rp2	59	28.5

HS330-002 BRASS HEX NIPPLE



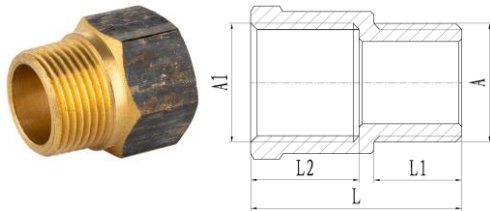
SIZE	A	L	L1
6x6	R1/8	19.5	7.5
8x8	R1/4	26.5	11
10x10	R3/8	28.5	11.5
15x15	R1/2	35.5	15
20x20	R3/4	39.5	16.5
25x25	R1	44.5	19
32x32	R1 1/4	51.5	21.5
40x40	R1 1/2	52.5	21.5
50x50	R2	61.5	26

HS330-003 BRASS HEX REDUCING NIPPLE



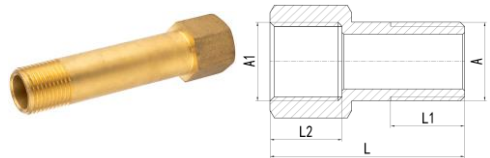
SIZE	A	A1	L	L1	L2
15x6	R1/2	R1/8	28	15	7.5
20x10	R3/4	R3/8	34.5	16.5	11.5
20x15	R3/4	R1/2	38	16.5	15
25x15	R1	R1/2	40.5	19	15
32x20	R1 1/4	R3/4	46.5	21.5	16.5
40x25	R1 1/2	R1	50	21.5	19
50x25	R2	R1	54.5	26	19

HS330-004 BRASS HEX SOCKET M&F



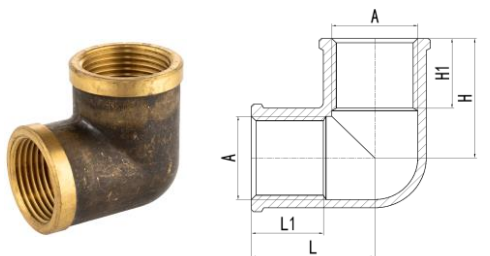
SIZE	A	A1	L	L1	L2
15x15	R1/2	Rp1/2	35	15	17.5
15x20	R1/2	Rp3/4	36	15	18.5
20x20	R3/4	Rp3/4	37.5	16.5	18.5
25x25	R1	Rp1	44	19	22

HS330-005 BRASS EXTENSION M&F



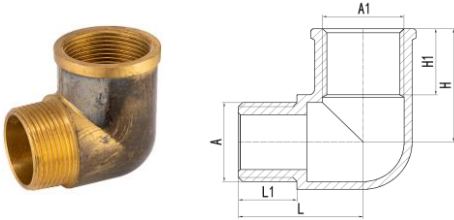
SIZE	A	A1	L	L1	L2
15x50mm	R1/2	Rp1/2	50	15	18.5
15x100mm	R1/2	Rp1/2	100	15	18.5
15x150mm	R1/2	Rp1/2	150	15	18.5

HS330-006 BRASS ELBOW F&F



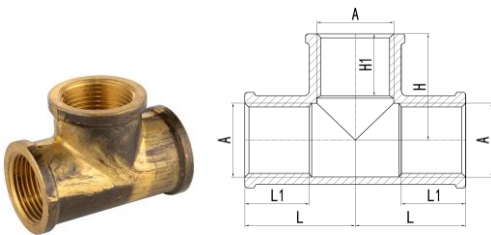
SIZE	A	L	L1	H	H1
6x6	Rp1/8	16	9	16	9
8x8	Rp1/4	21	13	21	13
10x10	Rp3/8	23.5	13.5	23.5	13.5
15x15	Rp1/2	30	17.5	30	17.5
20x20	Rp3/4	33.5	18.5	33.5	18.5
25x25	Rp1	40.5	22	40.5	22
32x32	Rp1 1/4	47.5	24.5	47.5	24.5
40x40	Rp1 1/2	51	24.5	51	24.5
50x50	Rp2	61	28.5	61	28.5

HS330-007 BRASS ELBOW M&F



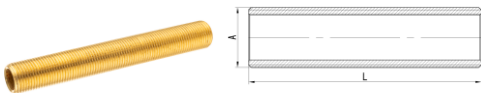
SIZE	A	A1	L	L1	H	H1
6x6	R1/8	Rp1/8	17.5	7.5	13.5	9
8x8	R1/4	Rp1/4	23	11	19	13
10x10	R3/8	Rp3/8	25.5	11.5	21.5	13.5
15x15	R1/2	Rp1/2	32	15	30	17.5
20x20	R3/4	Rp3/4	35	16.5	33.5	18.5
25x25	R1	Rp1	43.5	19	40.5	22
32x32	R1 1/4	Rp1 1/4	49	21.5	47.5	24.5
40x40	R1 1/2	Rp1 1/2	54	21.5	51	24.5
50x50	R2	Rp2	64	26	61	28.5

HS330-008 BRASS TEE



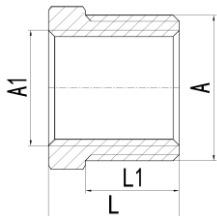
SIZE	A	L	L1	H	H1
8x8x8	Rp1/4	21	13	21	13
10x10x10	Rp3/8	23.5	13.5	23.5	13.5
15x15x15	Rp1/2	30	17.5	30	17.5
20x20x20	Rp3/4	33.5	18.5	33.5	18.5
25x25x25	Rp1	40.5	22	40.5	22
32x32x32	Rp1 1/4	47.5	24.5	47.5	24.5
40x40x40	Rp1 1/2	51	24.5	51	24.5
50x50x50	Rp2	61	28.5	61	28.5

HS330-009 BRASS ALL THREAD NIPPLE



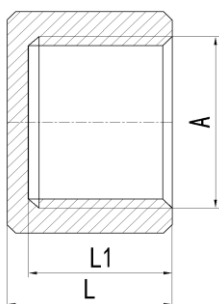
SIZE	A	L
15x150mm	G1/2	150
20x150mm	G3/4	150
25x150mm	G1	150
32x150mm	G1 1/4	150
50x300mm	G2	300

HS330-010 BRASS REDUCING BUSH



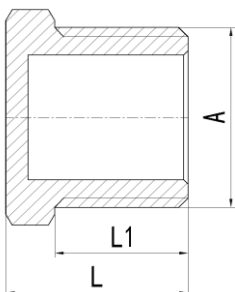
SIZE	A	A1	L	L1
10x8	R3/8	Rp1/4	17	11.5
15x10	R1/2	Rp3/8	20.5	15
20x8	R3/4	Rp1/4	23	16.5
20x15	R3/4	Rp1/2	23	16.5
25x20	R1	Rp3/4	25.5	19
32x25	R1 1/4	Rp1	30	21.5
40x15	R1 1/2	Rp1/2	31	21.5
40x32	R1 1/2	Rp1 1/4	31	21.5
50x20	R2	Rp3/4	35.5	26
50x40	R2	Rp1 1/2	35.5	26

HS330-011 BRASS CAP



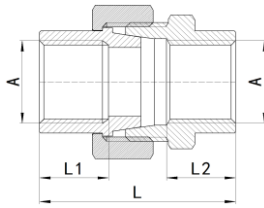
SIZE	A	L	L1
8	Rp1/4	15	13
10	Rp3/8	15.5	13.5
15	Rp1/2	19.5	17
20	Rp3/4	21	18.5
25	Rp1	24	21
32	Rp1 1/4	27	24
40	Rp1 1/2	27.5	24
50	Rp2	31.5	28

HS330-012 BRASS PLUG HEX SQUARE



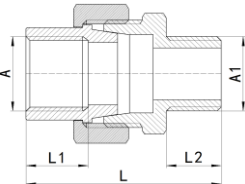
SIZE	A	L	L1
6	R1/8	12	7.5
8	R1/4	15.5	11
10	R3/8	17	11.5
15	R1/2	20.5	15
20	R3/4	23	16.5
25	R1	25.5	19
32	R1 1/4	30	21.5
40	R1 1/2	31	21.5
50	R2	35.5	26

HS330-013 BRASS BARREL UNION F&F



SIZE	A	L	L1	L2
15x15	Rp1/2	48.5	17	17
20x20	Rp3/4	52.5	18.5	18.5
25x25	Rp1	58	21	21
32x32	Rp1 1/4	69.5	24	24
40x40	Rp1 1/2	69.5	24	24
50x50	Rp2	78.5	28	28

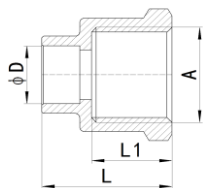
HS330-014 BRASS BARREL UNION M&F



SIZE	A	A1	L	L1	L2
15x15	Rp1/2	R1/2	53.5	17	15
20x20	Rp3/4	R3/4	61	18.5	16.5
25x25	Rp1	R1	68.5	21	19
32x32	Rp1 1/4	R1 1/4	78	24	21.5
40x40	Rp1 1/2	R1 1/2	78	24	21.5
50x50	Rp2	R2	88.5	28	26

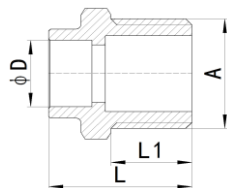
HS340 Brass End-feed Fitting

HS340-001 END-FEED CONNECTOR FEMALE



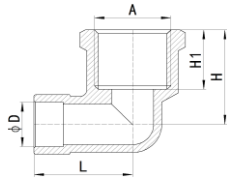
SIZE	D	A	L	L1
15Cx15FI	12.7	Rp1/2	27.5	17
20Cx20FI	19.1	Rp3/4	29	18.5

HS340-002 END-FEED CONNECTOR MALE



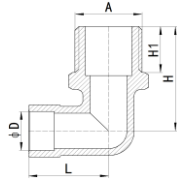
SIZE	D	A	L	L1
15Cx15MI	12.7	R1/2	26.5	15
20Cx20MI	19.1	R3/4	29	16.5

HS340-003 END-FEED ELBOW FEMALE



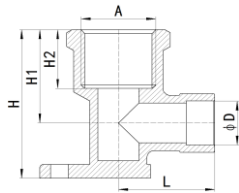
SIZE	D	A	L	H	H1
15Cx15FI	12.7	Rp1/2	27	27	17
20Cx20FI	19.1	Rp3/4	29.5	31	18.5

HS340-004 END-FEED ELBOW MALE



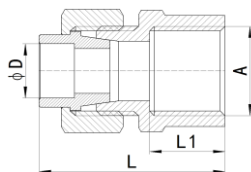
SIZE	D	A	L	H	H1
15Cx15MI	12.7	R1/2	25	34	15
20Cx20MI	19.1	R3/4	28	38.5	16.5

HS340-005 END-FEED WALL-PLATE ELBOW



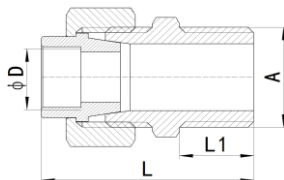
SIZE	D	A	L	H	H1	H2
15Cx15FI	12.7	Rp1/2	27	43	27	17
20Cx20FI	19.1	Rp3/4	29.5	50	31	18.5

HS340-006 END-FEED STRAIGHT UNION CONNECTOR FEMALE



SIZE	D	A	L	L1
15Cx15FI	12.7	Rp1/2	42	17
20Cx20FI	19.1	Rp3/4	45.5	18.5
25Cx25FI	25.4	Rp1	54	21

HS340-007 END-FEED STRAIGHT UNION CONNECTOR MALE



SIZE	D	A	L	L1
15Cx15MI	12.7	R1/2	43	15
20Cx20MI	19.1	R3/4	47.5	16.5
25Cx25MI	25.4	R1	57	19